

sm

STUDIO

**Copyright © 2017 SM Studio.**

All Rights Reserved. No part of this publication may be reproduced or distributed in any form or by any means, or stored in a database or retrieval system, without the prior written permission of the publisher.

Book Published by.



# BUILDING DREAMS ENRICHING LIVES

PLANNERS | ARCHITECTS | INTERIORS

## CONTENTS

WHO WE ARE	01
WHAT WE DO	02
HOW WE WORK	03
OUR CLIENTS	04
OUR WORKS	05
PRESS	06
ACHIEVEMENTS	07

# WHO WE ARE

We are an agile, dynamic 21st century design consulting firm that specializes in work place design, hotel interiors, large scale multi use developments & luxury homes. We create spaces that deliver profitable, sustainable and future ready solutions. Our mission aims to continue revolutionizing the delivery of design and build services across India. " At SM studio we don't just design spaces or arrive at solutions, we become an extension of your team to address your needs & aspirations".

## MISSION

We strive to achieve excellence in every aspect of delivering interior fit out solutions. Through continual innovation we deliver commercial, retail and residential spaces that encourage success and help people achieve their personal and commercial goals. We aim to contribute significant value to our clients, our employees and our community through innovation, sustainable development and global best practice.

## APPROACH

We drill deep to understand our clients specific objectives. We then translate these objectives into performance criteria for the relevant phases of design and execution. In terms of service delivery, these objectives relate back to a time, cost and quality relationship and we focus on optimizing all three. Our internal processes are quality assured and are based on global best practices that have been tailored to local conditions. These processes are managed by key personnel - experienced professionals from diverse backgrounds, each with specialized skills supported by strong academic qualifications.

## ETHICS

One of the cornerstones of our ethos is our belief in accreditation and we demonstrate a tangible commitment to quality, health & safety and the environment. Our recommendations go deeper than achieving green ratings – it's also about saving money through energy efficient practices and reducing both noise and light pollution. We look after our clients through our commitment to risk management by hiring highly-talented professionals from diverse backgrounds in specialist fields who work day and night to ensure project delivery objectives are met.



# WHAT WE DO

Our range of services includes architecture, interior design, master planning, urban design, sustainable design, design engineering, arts consultancy, landscape design & visualization.

## ARCHITECTURE DESIGN

Architecture is the cornerstone of smstudio's interdisciplinary design practice. Our approach leverages contemporary design thinking to define new buildings and redefine existing ones, re-purpose abandoned infrastructure, re-mediate brownfield sites, and create vibrant open space. We can design any building anywhere, with extraordinary results !!

## INTERIOR DESIGN

We offer a complete range of services for the planning, design, and delivery of interior environments. Services include strategy, space planning, and budgets, along with 3D visualization and animation. Our interior designs reflect each clients' business goals and their brand.

## URBAN DESIGN

Sm Studio's interdisciplinary urban design team weaves public spaces, diverse uses, and memorable context into a distinctive pattern of place.

Our work enriches lives through the design of extraordinary places, focusing on the best qualities of urban life !!

## LANDSCAPE DESIGN

We believe that the character and texture of the landscape profoundly influences both built structures and quality of life.

Integrated with our partners, we practice across a broad range of project types and scales, from intimate healing gardens to large-scale campuses.

## WORKPLACE CONSULTING

We align space requirements to business objectives; By discovering, understanding and defining an organization's unique workflow, communication patterns, and employee time utilization,

Smstudio create's spaces that ensure optimal outcomes.

## DESIGN & BUILD

We offer pre-construction services through to turnkey design and construction management. With a focus on quality within planned budgets, improved cost performance and accelerated project delivery, we can ensure optimal results.

# HOW WE WORK

THE DESIGN AND BUILT PROCESS.



PROGRAM  
DEVELOPMENT



SCHEMATIC  
DESIGN  
&  
DESIGN  
DEVELOPMENT



WORKING  
DRAWINGS  
&  
SPECIFICATIONS



COSTING



TENDER  
PACKAGE



CONSTRUCTION



POST  
CONSTRUCTION



HANDOVER

# OUR CLIENTS

Our work emphasizes on agile work places to luxury interiors.

We have a contemporary outlook to design which allows us deliver creative solutions to multiple sectors including hotels, it parks, mixed use developments, multi dwelling residential units, stand alone bungalows and weekend housing schemes.



## TESTIMONIALS

**Aijaz Shaikh,  
Site Facility Head, JLL**

The design provided by smstudio was practical, and their efficient space planning and design skills optimized the existing space to incorporate our expanding resources. Smstudio's design demonstrated complete responsibility and control over the project despite changes on the design and a demanding timeline.

**Procter & Gamble**

**Anoop Garg,  
Director.**

Sm studio ensures that they deliver, based on research and latest trends. they have always kept in mind our vision and have delivered the same.

**Markets & Markets**

**Cpt. Arun Kajal,  
Head Facilities & Prop.**

During our association with sm studio, we were very impressed with the kind of attention to detail, rigorous research, quick and accurate implementation and successful handover of the project undertaken by them. We remain highly appreciative of their skills and look forward to future projects.

**Capita**

**Girish Nayar,  
Administration Head.**

The team from Smstudio delivered a turn-key office of 5,600 sq.ft. in three months. They had absolute control and responsibility. They were truly dedicated to our management points of view and exceeded our expectations.

**Arkema**

**Jyotin Sheth,  
Director.**

During our association with Smstudio, we were very impressed with the kind of attention detail, rigorous research, quick and accurate implementation and successful handover of the project undertaken by them. We remain highly appreciative of their skills and look forward to future projects.

**Umbergaon Club**

**Administration Head**

Why do we use Smstudio as our architects? One, their owners are involved, and they are passionate about their business as well as ours. Two, they are creative and innovative. And three, they are responsive, responsible and reliable.

**Arcil**



# OUR SPREAD



Tech  
Mahindra



Godrej

ICICI Bank



ASIAN  
HEART INSTITUTE

Raychem RPG

GVK

BLUE DART



CAPITA

Arcil  
Premier ARC

Willis  
Towers  
Watson

ARKEMA  
INNOVATIVE CHEMISTRY



credence  
analytics

SREI  
Together We Make Tomorrow Happen

SYNERGIES  
WORLDWIDE

Krishna  
PEARLS & JEWELLERS  
An ISO 9001:2008 Certified Company

VIRAL  
CORPORATION (INDIA) PVT. LTD.

suchirindia

SHERA™

Serta

DNV·GL

ACC

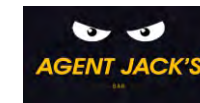


ITC  
ITC Limited

future group

HEERA

PARK HOTEL



CINEPLEX  
ENTERTAINMENT

GAMMON  
Builders to the Nation

THE UMBERGAON CLUB  
Rise. Relive. Rejuvenate.

Rustomjee

forum  
GROUP

Parsvnath  
committed to build a better world

BHUTRA  
A legacy of trust

AJ  
GROUP  
An ISO 9001:2008 certified company

# OUR WORKS

MISCELLANEOUS 06  
RESIDENTIAL 05  
HOSPITALITY 04  
COMMERCIAL 03  
ARCHITECTURE 02  
URBAN PLANNING 01

# URBAN PLANNING

LANDSCAPE DEVELOPMENT 04  
GOVARDHAN GARDENS 03  
GOVARDHAN MOTA 02  
VIVEZA 01



# viveza

**LOCATION:** LONAVALA, MAHARASHTRA  
**CLIENT:** RONCH REALITY  
**TYPE:** WEEKEND HOUSING SCHEME  
**AREA:** 10 ACRES  
**YEAR:** 2015  
**STATUS:** UNDER CONSTRUCTION

Viveza was designed as an emblem of aristocracy though the underlined concept remained of a second home. It's a unique bungalow scheme, comprising of 20 , twin villas equipped with superlative amenities, lavish interiors and an overwhelming location.













# govardhan mota

LOCATION: SURAT, GUJARAT

CLIENT: GOVARDHAN DEVELOPERS

TYPE: WEEKEND HOUSING SCHEME

AREA: 20 ACRES

YEAR: 2014

STATUS: UNDER CONSTRUCTION

A weekend getaway housing scheme plotted on an area of 20 acres with 200 row houses, an opulent club house & a serene backdrop. The housing scheme also housed a preschool, a creche and a small health centre along with the community centre housing a 5D cinema hall & a luxurious clubhouse.









# govardhan gardens

LOCATION: JETHPUR, SURAT, GUJARAT.  
CLIENT: GOVARDHAN DEVELOPERS  
TYPE: WEEKEND HOUSING SCHEME  
AREA: 16 ACRES  
YEAR: 2014  
STATUS: UNDER CONSTRUCTION

A vacation home, housing scheme plotted on an area of 40 acres with 200 VILLAS, an opulent club house & a serene backdrop. In addition to the above, the scheme also boasts of a state of art community center with a 4d cinema experience, a 4th generation security system, solar empowered lighting & hot water facilities & in-house maintenance team, making the design futuristic, enabling the buyers to have a maintenance free and sustainable second home.





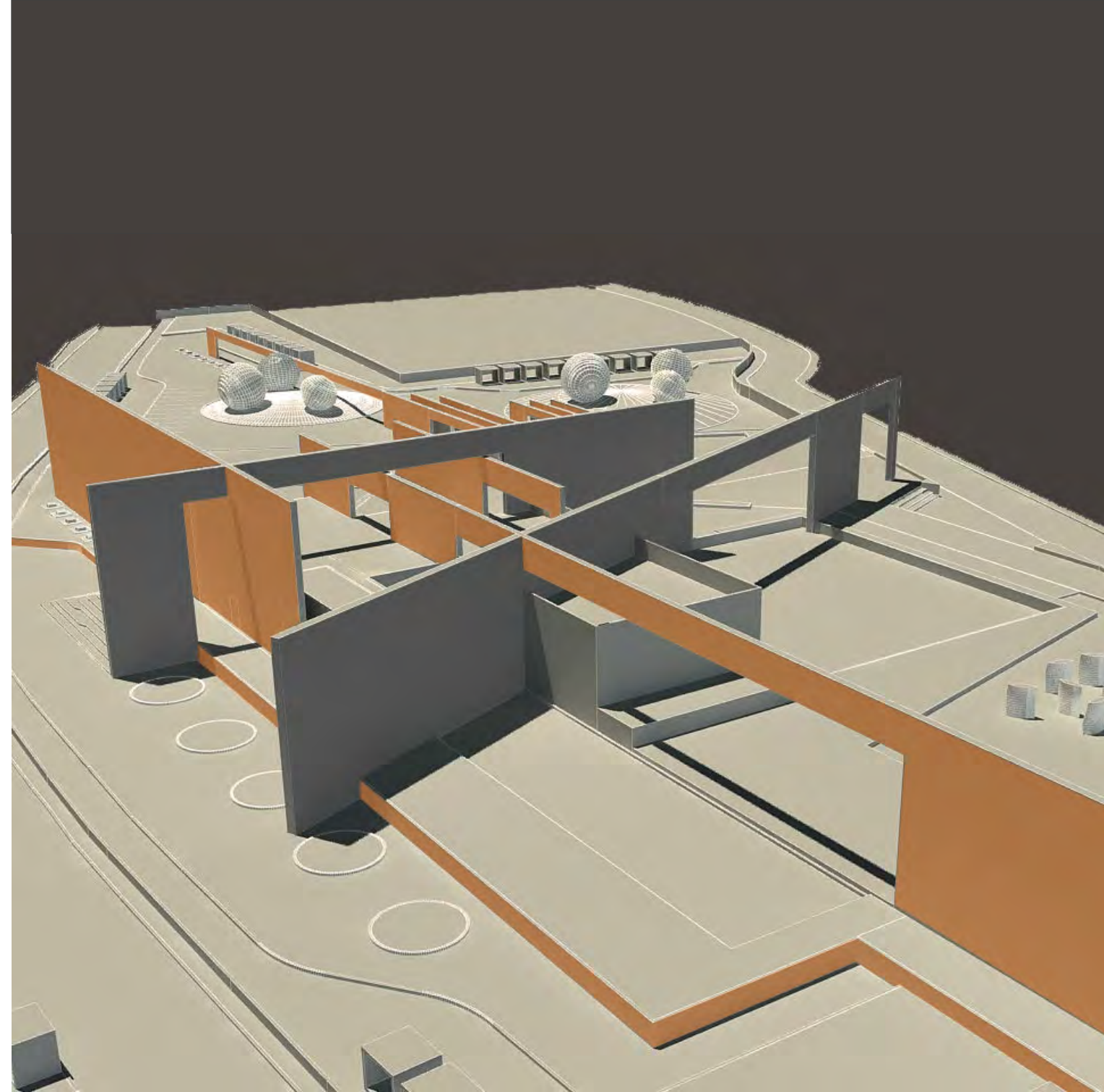




# landscape development

**LOCATION:** DAMAN, U.T. OF INDIA.  
**CLIENT:** GOVERNMENT OF DAMAN.  
**TYPE:** URBAN DESIGN  
**AREA:** 5 ACRES  
**YEAR:** 2008  
**STATUS:** UNBUILT

A design created for the Government of Daman, where the public spaces cover around five acres with 500 meter frontage offering an array of community centric services that promotes a healthy lifestyle as well as lending support to cultural activities and local art. These have all been put together in a futuristic design that is bound to awe and delight the visitors.



# ARCHITECTURE

DIVYA DRASHTI 06  
CHOKSI 05  
FREEDA 04  
ACC HEADQUARTERS 03  
GANESH KRUPA 01



# ganesh krupa

**LOCATION:** MALAD, MUMBAI.

**CLIENT:** DHARMA CONSTRUCTIONS

**TYPE:** RESIDENTIAL HIGHRISE

**AREA:** 25,000 ft<sup>2</sup>

**YEAR:** 2016

**STATUS:** UNDER CONSTRUCTION

This multi-unit residential tower spanning 13 floors has been designed keeping the public spaces catering to the recreational needs of both the young & the old. Hence though a very inwardly planned residential building in a tight plot at the suburbs of malad, it has been opened up by converting the terrace into a sky garden, the refuge floor into a club house & the ground floor into a huge entrance lobby.





# acc headquarters

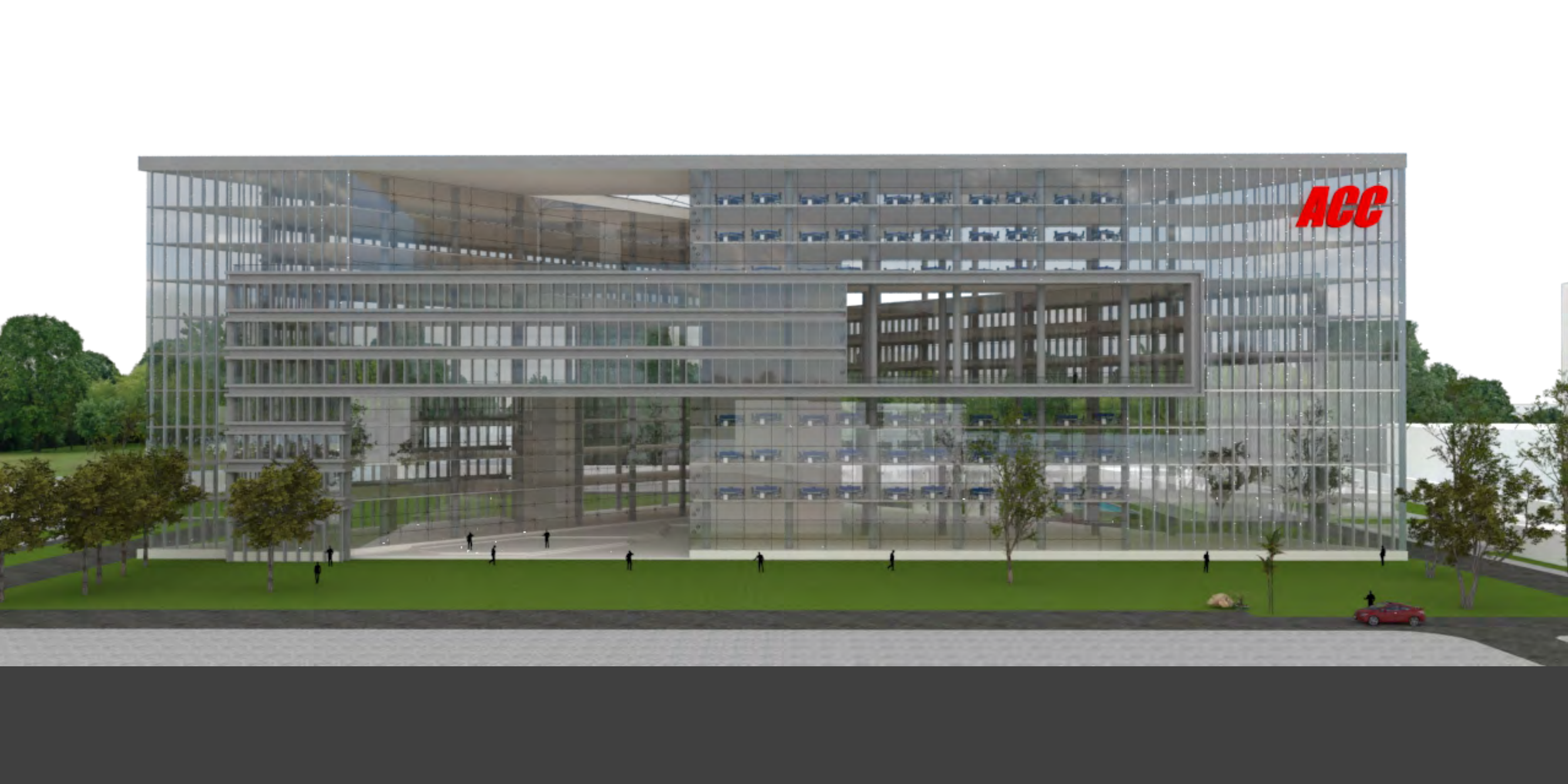
**LOCATION:** THANE, MAHARASHTRA  
**CLIENT:** ACC  
**TYPE:** COMMERCIAL ARCHITECTURE  
**AREA:** 2,00,000 ft<sup>2</sup>  
**YEAR:** 2016  
**STATUS:** UNBUILT

This proposal was made for ACC, when the client ask was A new landmark for the city of eastern Mumbai . The nine-storey ACC office building was planned when the client was planning to merge its horizontally laid offices in the existing complex & the other operations laid across the city to one place. The ACC building actually functions as a hinge between the dynamics exhibited by the flyover on one side ,the LBS MARG ON ANOTHER , and the tranquility offered by the road leading towards Thane station.

Z-shaped, opposing mirrored 'bars' of offices form the core element of the building, three to four-storey air spaces come about in the courtyard areas. Four sky courts and two four-stored lobbies form lively 'display windows' planted with greenery, and are perceived as appealing eye-catchers not only by day and by night: they equally create a pleasant atmosphere for the employees working in the building. The complex is enclosed by a glass shell for reasons dealing with climate control and protection against noise. The office areas lie either near one of the courts or adjoin the outer double-skin façade. This enables the rooms to be naturally ventilated to a large extent, which was planned to enable lower the cost of HVAC making it sustainable, energy efficient & climatically responsible building.

The structure is mirrored on every fourth floor within the building's triangular contour. This creates grand interiors, exposes the building's depths to light, and opens up a window to the CITY on every side.







# freeda

LOCATION: BANDRA, MUMBAI.  
TYPE: RESIDENTIAL HIGHRISE  
YEAR: 2012  
STATUS: COMPLETED

A slender, 10 storey elegant tower, located just opposite to carter road, houses deluxe serviced apartment's having prominent headroom and spread of the entire floor. This tower currently houses many who's who of today.





# choksi

**LOCATION:** JUHU , MUMBAI.

**CLIENT:** HINDUSTAN PLATINUM

**TYPE:** RESIDENCE BUNGALOW

**AREA:** 12,500 ft<sup>2</sup>

**YEAR:** 2008

**STATUS:** COMPLETED

We took on the challenge of creating an UBER chic yet, luxurious residential bungalow against The client's brief of a contemporary abode with a diversity of rooms to support the large family's varied interests.

To accomplish this task, WE punctured the otherwise cube with double height sky courts giving the same a very Swedish look. Also as one enters this multistory bungalow, there is a central garden which many of the rooms overlook into. For individual spaces, we have brought in a spacious feel by having larger windows for the homes, orienting the windows such that no two face each other directly.

A chic, fashionable design with a minimal look was opted throughout, & to achieve the same a stylish blend of stone, raw concrete and actual wooden planks were used across to create varying moods. "Go Green" stayed the underlining requirement throughout !! The house comes fully equipped with solar panels, led lights, vrf cooling systems & a solar water heating facility as well.





# divya drashti

**LOCATION:** LONAVALA, MAHARASHTRA

**CLIENT:** PRIVATE CLIENT

**TYPE:** RESIDENTIAL BUNGALOW

**AREA:** 7000 ft<sup>2</sup>

**YEAR:** 2017

**STATUS:** COMPLETED

There's no better way to blow off some of the city stress than relaxing in the peaceful confines of nature at one of the farm stays near Mumbai!

Located in Lonavala amidst lush green expanses, the design of the bungalow is in a minimalist style for an uncluttered look to match the openness of the surrounding. The idea was to make the outside and the inside, a part of each other rather than being separate. A weekend home with plenty of natural light and framed views of the scenery around, the owner's desire for his home was a modern dwelling against the laid back visual setting.

The key principle of design for this project was rooted in the universal element of three dimensional space and form, like the double height volume in the living room, which distinctively is the heart of the design. As a part of the brief, the client also emphasized on optimum use of spaces, to which as a design response we provided full height sliding windows that opened up the interior spaces, extended the living area to the balconies and provided privacy where required. A strict geometry defines the architecture of this building with a well-proportioned façade composition, inspired by the 20th century Italian Architects.









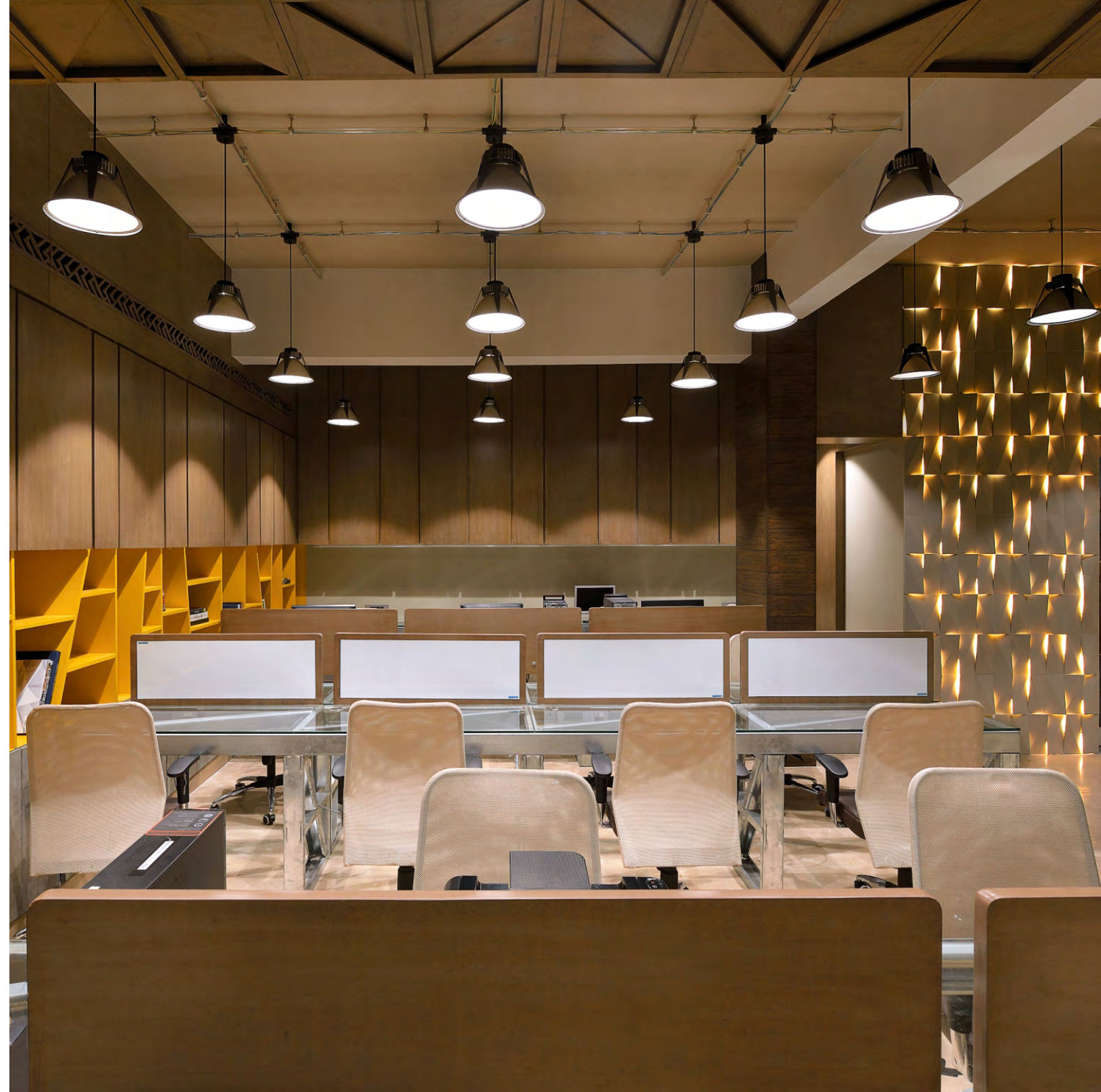
# COMMERCIAL

**MOCHA 06**  
**GINGER 05**  
**ECI 04**  
**ARCIL 03**  
**ARKEMA 02**  
**SHERA 01**

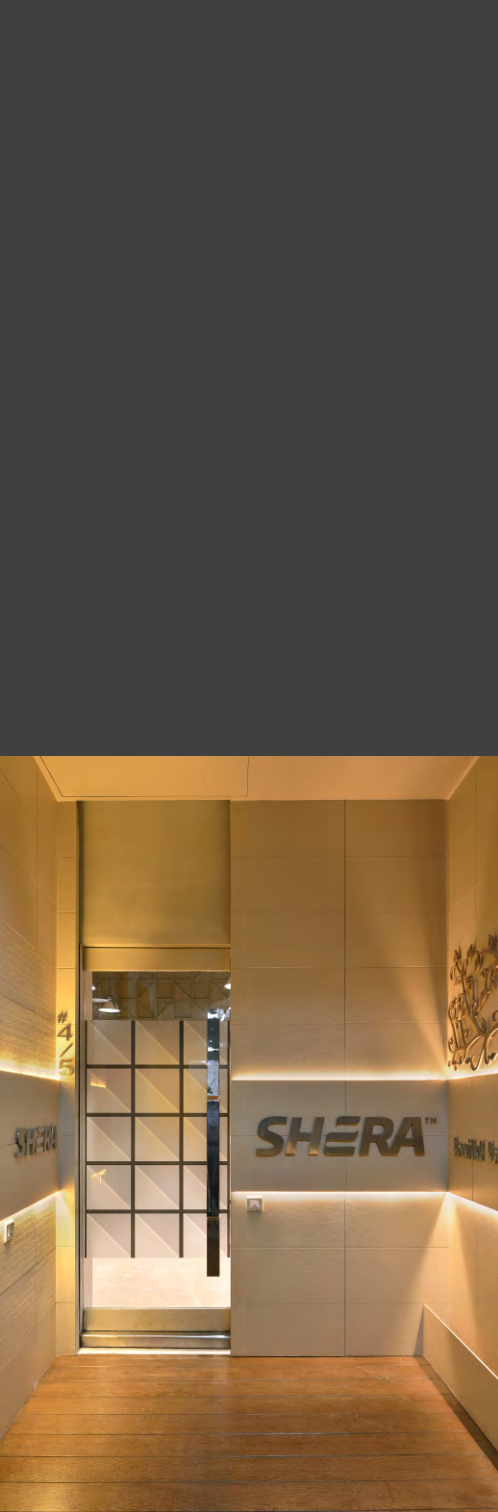
# shera

**LOCATION:** ANDHERI (W), MUMBAI  
**CLIENT:** SHERA  
**TYPE:** COMMERCIAL INTERIORS  
**AREA:** 1,500 ft<sup>2</sup>  
**YEAR:** 2014  
**STATUS:** COMPLETED

In India , Shera ply, was first of its kind to adhere to all the green certifications and be used for various functions both interiors & exteriors including furniture applications. At this Juncture it was rather a challenge for us, to ourselves first explore the material to its complete potential, keeping the context in mind. An answer to this; was a huge loft with an un-office like ambience i.e a bare shell office with its warmth emerging from its grey backdrops.









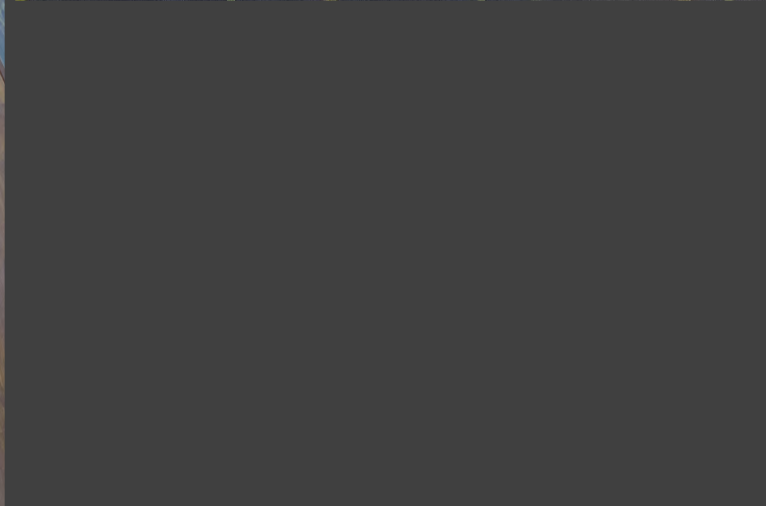
# arkema

**LOCATION:** THE RUBY, DADAR, MUMBAI  
**CLIENT:** ARKEMA  
**TYPE:** COMMERCIAL INTERIORS  
**AREA:** 5,000 ft<sup>2</sup>  
**YEAR:** 2016  
**STATUS:** COMPLETED

Keeping in line with the colors, logo and theme of the company, the office interiors was designed to reflect the warm legacy of Arkema which is a multi-branded, Future 500 Company. Keeping in mind its diversity, the same was reflected in their design, by use of customized graphics, fixtures & accessories.









# arcil

**LOCATION:** MATUNGA, MUMBAI  
**CLIENT:** ARCIL  
**TYPE:** COMMERCIAL INTERIORS  
**AREA:** 25,000 ft<sup>2</sup>  
**YEAR:** 2011  
**STATUS:** COMPLETED

SMSTUDIO worked with ARCIL's team to design a workplace that increases productivity and accommodates new ways of working. The design also helps ARCIL standardize technology use, increase spontaneous interaction and collaboration, and improve employee health and wellness by encouraging movement in the office, which are in turn lined with series of artwork that come together like an art museum. The space includes open-plan offices and enclosed meeting areas as well as private CABINS FOR THE LEADERSHIP TEAM. New adjacencies make it easier for teams and individuals to collaborate.

arcil

All cabins were lined at the façade, but natural light travels through the façade into the workstation areas through glass partitions. The workspace is finished in a warm, neutral palette of earth tones. Open collaboration furniture incorporates splashes of color at the colab area.

A café that accommodates 50 people encourages a shift from the "eat at your desk" culture and serves as a gathering space for employees. The reception and client area has been kept at the innermost side, facing the central atrium of the tower, giving views to the voluminous chandelier installed by "THE RUBY and direct access to meeting space for visitors. SMSTUDIO collaborated with ARCIL to develop and implement a change management process that helped employees prepare for the move and adapt to their new workplace.











**LOCATION:** ANDHERI, MUMBAI  
**CLIENT:** ECI  
**TYPE:** COMMERCIAL INTERIORS  
**AREA:** 25,000 ft<sup>2</sup>  
**YEAR:** 2008  
**STATUS:** COMPLETED

Communication and collaboration were uppermost priorities for the workplace design of this TELECOM TESTING GIANTS spacious office, at the same time enhancing brand and identity. The tight time frame called for rapid decision-making that led to an original & innovative space planning. Achieving a sustainable, environment friendly, modern & minimal workplace was the key driving factor here!









# ginger

**LOCATION:** RAGHUVANSHI MILL, MUMBAI  
**CLIENT:** PRIVATE CLIENT  
**TYPE:** COMMERCIAL INTERIORS  
**AREA:** 10,000 ft<sup>2</sup>  
**YEAR:** 2016  
**STATUS:** COMPLETED

This magnificent contemporary & Baroque styled, ornamental office of an established enterprising company merges romance, abstract elements of nature and Art Deco-inspired elements in a luxurious and luminous setting, much in line with their theme of the company.

The challenge was to polish the brilliance of one of the country's pre-eminent group of companies into a dazzling setting for a 10000 sft retreat. It's not surprising that light and reflection are key facets of this jewellery-themed art deco renovation. "It's the dynamics of how they're used that elevates inspiration to innovation." The monumental volume & the space helped us emerge apart!









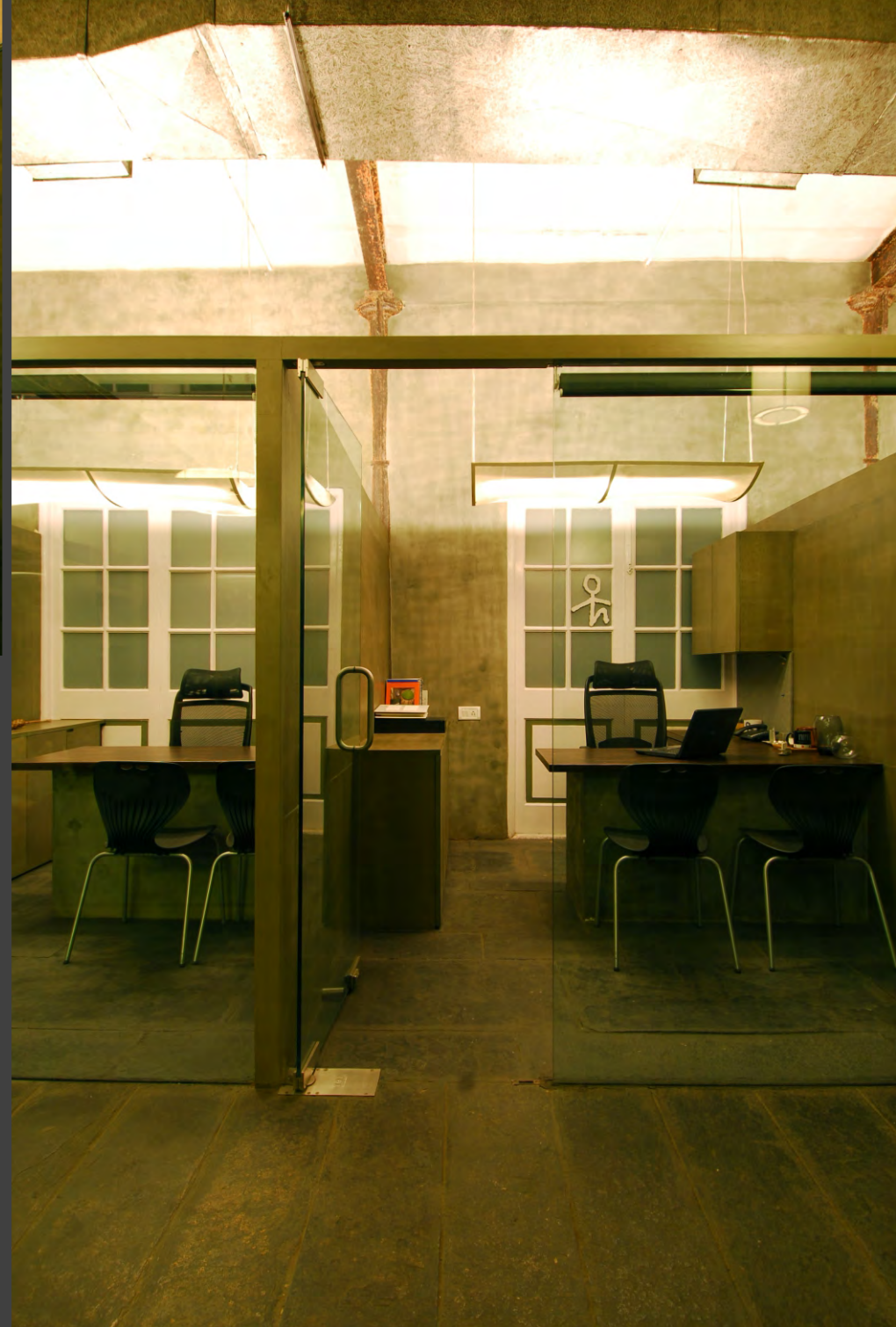
# mocha

LOCATION: BYCULLA, MUMBAI  
CLIENT: MOCHA  
TYPE: COMMERCIAL INTERIORS  
AREA: 5,000 ft<sup>2</sup>  
YEAR: 2008  
STATUS: COMPLETED

The office could be best described as Spartan & minimal, where every detail was given attention to !  
A personal den in the office to the owner; was just the right connect between luxury & warmth.







# HOSPITALITY

HOTEL AT MUNDRA 05  
RESORT AT UMBERGAON 04  
LONAVALA HOTEL 03  
ICICI GUEST HOUSE, HYD 02  
ICICI GUEST HOUSE, MUM 01



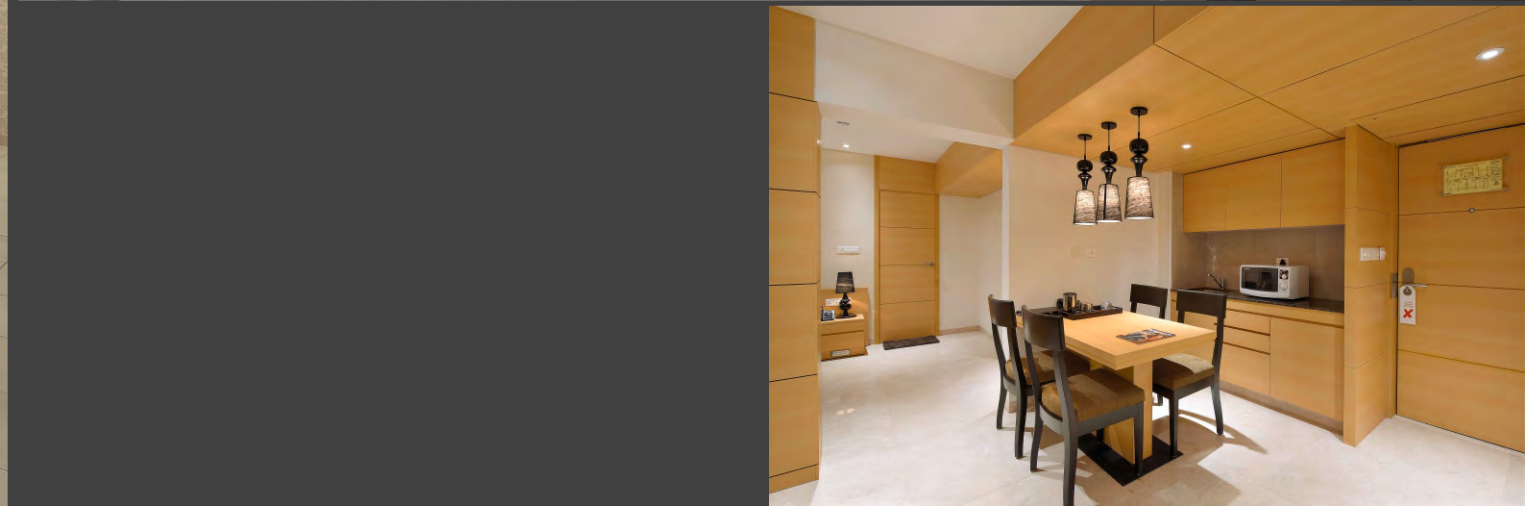
# icici guest house mum

**LOCATION:** ANDHERI, MUMBAI  
**CLIENT:** ICICI  
**TYPE:** GUEST HOUSE  
**AREA:** 20,000 ft<sup>2</sup>  
**YEAR:** 2013  
**STATUS:** COMPLETED

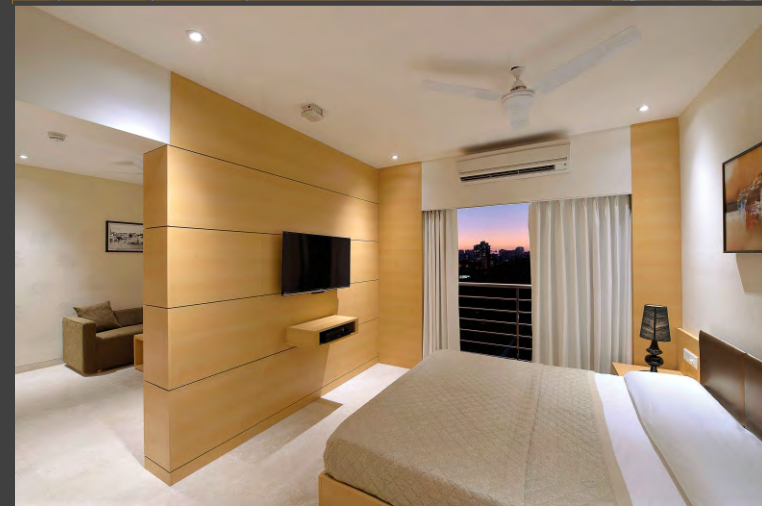
Consisting of 40 standard rooms, a chic lobby, business centre and a food and beverage outlet, the unique design for this small business hotel is quirky and fun yet homely and stylish. Playing with contrasting themes of real/faux and traditional/modern, the standard room design emulates and reinterprets the grandness of a traditional bedroom.













# icici guest house hyd

**LOCATION:** GACHIBOWLI, HYDERABAD  
**CLIENT:** ICICI  
**TYPE:** GUEST HOUSE  
**AREA:** 5000 ft<sup>2</sup>  
**YEAR:** 2016  
**STATUS:** PROPOSAL

The brief entailed converting a 7 storied 2BHK residential building into a 40 key guest house. The program spanned approximately 5000 sft, into 14 guest of 2 typologies, a café, a reading lounge & a bar area. Client's desired plush guest rooms, which would be at par with any business class boutique hotel, which are equipped with all modern amenities and facilities. The visitors would exclusively be employees or guests of ICICI.









# lonavala hotel

**LOCATION: LONAVALA, MAHARASHTRA**

**CLIENT: PRIVATE CLIENT**

**TYPE: HOTEL**

**AREA: 20'000 ft<sup>2</sup>**

**YEAR: 2016**

**STATUS: PROPOSAL**

The Brief entails design of a 35 key hotel at step levels with a double height entrance lobby , a 250 seat banquet & multi cuisine lounge & bar areas along with spread out public spaces. The design sets out all rooms open onto the lawn, ensuring adequate daylight and exposure to nature though the solar influx does not heat them up in-ordinarily.

To create a vivid screen, we have broken the glass façade with grills, motifs & wood looking e-boards. This façade serves as a shield to the built form from the intense weather conditions, as well as plays with the light & shade to create an interesting interior. This element while breaking the monotony of the glass façade creates a warm & interesting exteriors.

The terrace houses landscaped garden enhancing the façade while insulating the roof, hence reducing the air conditioning costs.





# resort at umbergaon

**LOCATION:** UMBERGAON, GUJARAT  
**CLIENT:** MR. JYOTIN SETH  
**TYPE:** CLUB  
**AREA:** 8 ACRES  
**YEAR:** 2011  
**STATUS:** COMPLETED

Mystical, mysterious and deeply spiritual ... words alone cannot convey the complexity and depth of its surroundings, its rich religious and artistic culture and the multi-layered, dense and spatial architecture unique. The plot spread of 8 acres at umbergaon, offers something measurably different, alternative and unique to other destinations.

Being easily accessible & at closest proximity to industrial hubs, this place has begun to suffer from its tremendous success. Our design for Uumbergaon club offers little more than a pause, a space, a retreat, in keeping with the sense of space and time.









# hotel at mundra

**LOCATION:** MUNDRA, GUJARAT  
**CLIENT:** B M ROADWAYS  
**TYPE:** HOTEL  
**AREA:** 35'000 ft<sup>2</sup>  
**YEAR:** 2010  
**STATUS:** COMPLETED

A 75 key boutique hotel, located in a prominent area, en-route the port of Kandla. It is designed to be a definite landmark. Clad with raw sandstone like texture paint, glass & the intricate jharokas give this built form a modern vocabulary, amidst a traditional setting, which blends into the architecture of the city.









# RESIDENTIAL

**GHODAWAT RESIDENCE 04**  
**BANDRA RESIDENCE 03**  
**HEERA BLUE WATERS 02**  
**MADHUNIKETAN 01**



# madhuniketan

**LOCATION:** MUMBAI, MAHARASHTRA.

**CLIENT:** PRIVATE CLIENT

**TYPE:** RESIDENTIAL INTERIORS

**AREA:** 10,000 ft<sup>2</sup>

**YEAR:** 2014

**STATUS:** COMPLETED

The client was looking for a high tech "smart home" that felt luxurious yet urban and unique.

The apartment is located on the terrace floor in a highly commercial area, hence we decided to create a unique indoor/outdoor living space that included gardens on both ends of the residence hence offering a serene escape from the bustling suburban Mumbai roads and a feeling of overlooking the city rather than living in it.

The overall space offers four bedrooms - 2 master bedrooms, a kids bedroom and a guest bedroom, a beautiful pooja (prayer) room, and a huge entrance lobby connecting the various spaces to the main living-dining areas and the kitchen which acts as the service core.

Hues of beige, browns and whites with additional in fills of color as an exotic accent, was kept as an overall theme.









# heera blue water

**LOCATION:** TRIVANDRUM, KERALA  
**CLIENT:** HEERA DEVELOPER  
**TYPE:** RESIDENTIAL INTERIORS  
**AREA:** 3500 ft<sup>2</sup>  
**YEAR:** 2013  
**STATUS:** COMPLETED

Located on a highly contoured site overlooking the Akolam river, this house is an interesting contemporary reinterpretation of the traditional Mediterranean home. Built of ideal square cube- shaped sections, the rooms are determined by the house's external form, juxtaposed with huge windows to capture the views around.

The large windows make use of natural light and are interspaced with smaller ones that light specific areas variably in the house & also frame the horizons.

The entire house is divided into public & private spaces. To make the spaces highly cohesive & interactive the public spaces of the house like living, dining & family rooms along with the kitchen are given an entire open feel .. Informal demarcations between the spaces to give the required feel of definition to function have been provided by dividing screens or huge sliding doors. Alternatively, the same have been bonded together by use of common material palettes.

The public spaces not only define a high level of luxury in terms of look and feel but are further accentuated by the use of automated lighting controls, integrated security system, entertainment and HVACs controls as well..









# bandra residence

**LOCATION:** MUMBAI, MAHARASHTRA

**CLIENT:** HEERA DEVELOPER

**TYPE:** RESIDENTIAL INTERIORS

**AREA:** 9000 ft<sup>2</sup>

**YEAR:** 2008

**STATUS:** COMPLETED

The site is located amidst the busy bustling city of Mumbai, wherein its neighbourhood is sprawling settlements of varied types and cultures representing reminiscence of decades of history in truly metropolitan way. A conscious effort to cut off city's buzz and to have a calm & mood setting environment within the house was achieved by rational approach of design.

There are a couple of design elements which makes a genuine symphony of client's requirement. The frameless glass at the entrance which continues inside, gives uninterrupted view of the adjacent lawn.

The public and private life are combined in a shielded open plan form – where at one time it is an extrovert design where all the spaces blends into a single entity, or else just shuts itself like an introvert, cutting public spaces from private spaces. The public spaces are business lounge & bar, office space and living spaces whereas private spaces forms bedrooms, kitchen & dining spaces.

Being constructed on the top most floor of a very conventional type of apartment building in Indian setting, all the basic structural elements & services are well camouflaged with exterior and interior design elements which becomes the feature of the house.

Traces of color are splashed around in the furnishing and usage of traditional patterns in panelling adds a touch of warmth in the otherwise clean cut elegant design.









# ghodawat residence

**LOCATION:** DAHANU, MAHARASHTRA.

**CLIENT:** PRIVATE CLIENT

**TYPE:** RESIDENTIAL INTERIORS

**AREA:** 3,500 ft<sup>2</sup>

**YEAR:** 2017

**STATUS:** COMPLETED

A duplex apartment that houses three generations has been designed with eclecticism - reflecting the home owner's personality with a quotient of flamboyance. Taking the family requirements into consideration and with the added benefit of the owner being personally involved in the project, the design of the building was modified to create spaces that would emulate the feel.

A muted canvas of white and browns with shimmering accents brought in by choice of materials and furnishing fabrics outlines the interior scheme of this apartment, while merging Vastu Shastra guidelines with planning principles - the form and function had to be orchestrated into a charming home. Optimum use of high-end materials like Leather, Glass, Veneer, Corian, Wallpapers and techniques like gold leafing and silver foiling lend an ultra-plush touch.

Specially commissioned and handpicked artwork infuses soul into the décor of the entire house while open planning gives a feeling of spaciousness and visual connectivity as the Living, Dining and Kitchen areas come together as a single large space, screened by customized Wooden "Jaali".

The first level comprises of two Guest bedrooms, Grandparent's room, Living, Dining, Kitchen areas and the servant's quarter while the upper floor has a Master bedroom and the son's bedroom opening up to an informal family area. The grandeur of the house is aptly reflected in the staircase leading to the upper level.

Every bedroom suite is designed to suit the specific user - whether its a thoughtfully planned design for the elderly or a more youthful look for the son. The master suite has an indulgently luxurious layout and décor treatment. The overall ambience of this Duplex home is a combination of class and comfort to exude a dignity and grace.













# MISCELLANEOUS

**RUSTOMJEE TEMPLE 02**  
**SHERA STALL 01**



# shera stall

LOCATION: ACE TECH, MUMBAI  
CLIENT: SHERA  
TYPE: MISCELLANEOUS  
AREA: 1,000 ft<sup>2</sup>  
YEAR: 2015  
STATUS: COMPLETED

The key to any trade show stall is, of course, a killer display, hence selecting the right style, colors, lighting and features was the key that could have made or broken the whole experience. At Shera, we can see the perfect blend of all that a TRADESHOW looks for ....!!









# rustomjee temple

LOCATION: ACE TECH, MUMBAI

CLIENT: SHERA

TYPE: MISCELLANEOUS

AREA: 1,000 ft<sup>2</sup>

YEAR: 2015

STATUS: COMPLETED

The key to any trade show stall is, of course, a killer display, hence selecting the right style, colors, lighting and features was the key that could have made or broken the whole experience. At Shera, we can see the perfect blend of all that a TRADESHOW looks for ...!!





# PRESS



SM Studio has received recognition and coverage globally over years for our commendable work and professional expertise.



# ACHIEVEMENTS



**IIID MK 2007 NATIONAL  
RESIDENTIAL INTERIOR DESIGN**



**IIID MK 2008 REGIONAL  
COMMERCIAL INTERIOR**



**IIID MK 2007 REGIONAL  
HERITAGE INTERIOR DESIGN**



**IIID MK 2009 NATIONAL  
SINGLE DWELLING**



**IIID MK 2007 REGIONAL  
RESIDENTIAL INTERIOR DESIGN**



**IIID MK 2007 REGIONAL  
GREEN INTERIOR DESIGN**



**IIID MK 2009 REGIONAL  
MULTI DWELLING**



**IIID MK 2007 REGIONAL  
EMERGING INTERIOR DESIGN**

SM Studio has received recognition and coverage globally over years for our commendable work and professional expertise.









**SCAN  
ME!**



**Add:** 001, Building No. 33B,  
Azad Nagar No.2, Veera  
Desai Road, Andheri(W),  
Mumbai 58.

**Email:** [studio@smstudio.co.in](mailto:studio@smstudio.co.in)

**Web:** [www.smstudio.co.in](http://www.smstudio.co.in)

**Tel No:** 022 6451 2491